

Pigeon Homing along Highways and Exits

Hans-Peter Lipp, Alexei L. Vyssotski,
David P. Wolfer, Sophie Renaudineau, Maria Savini,
Gerhard Tröster, and Giacomo Dell’Omo

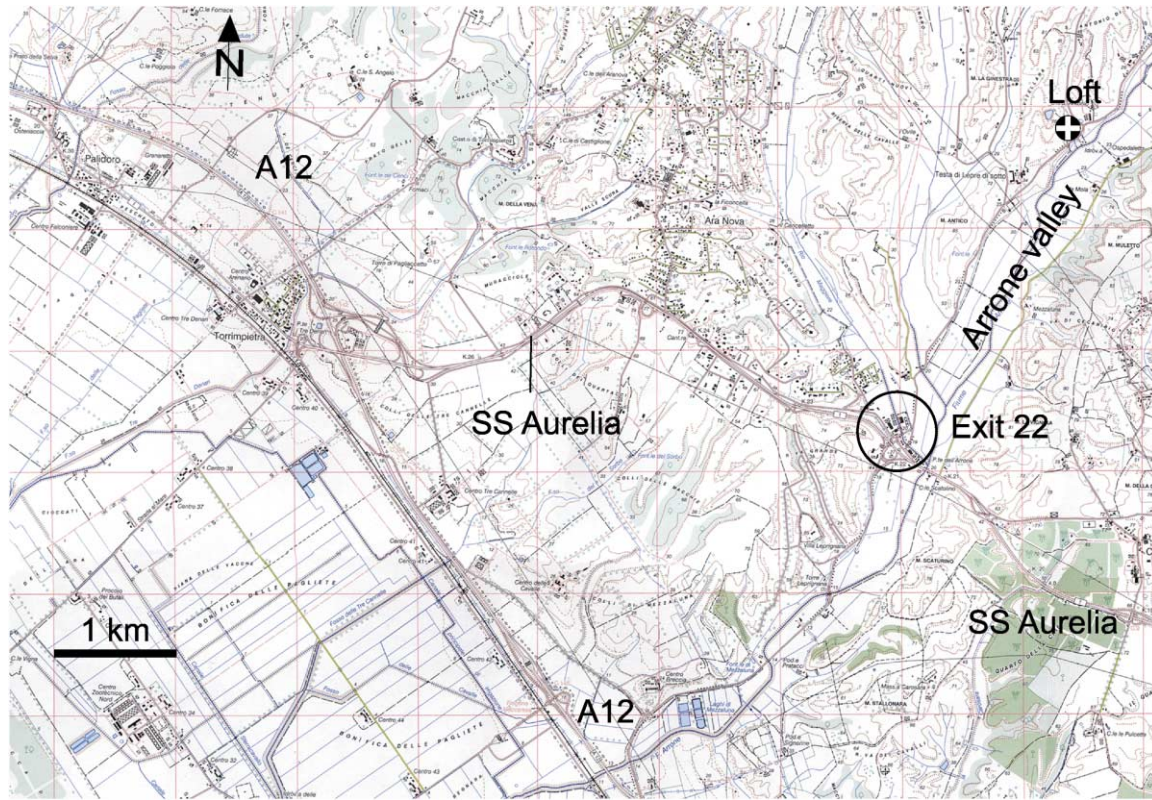


Figure S1. Topography of the Loft Area Shown on 1:25000 Map without Tracks

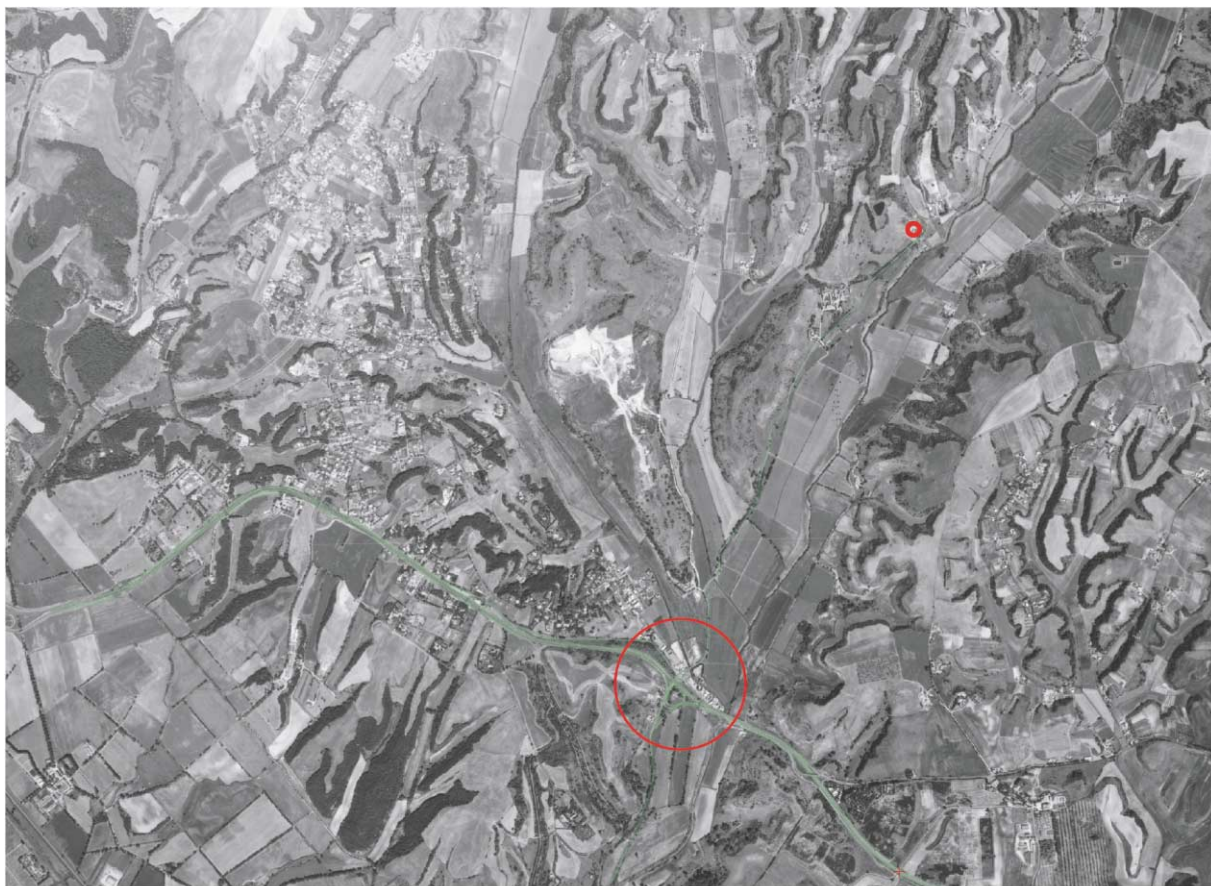


Figure S2. Satellite View of Arrone Valley

The SS Aurelia and Valley Road are green, exit 22 is a large red circle, and the loft is a small red circle.

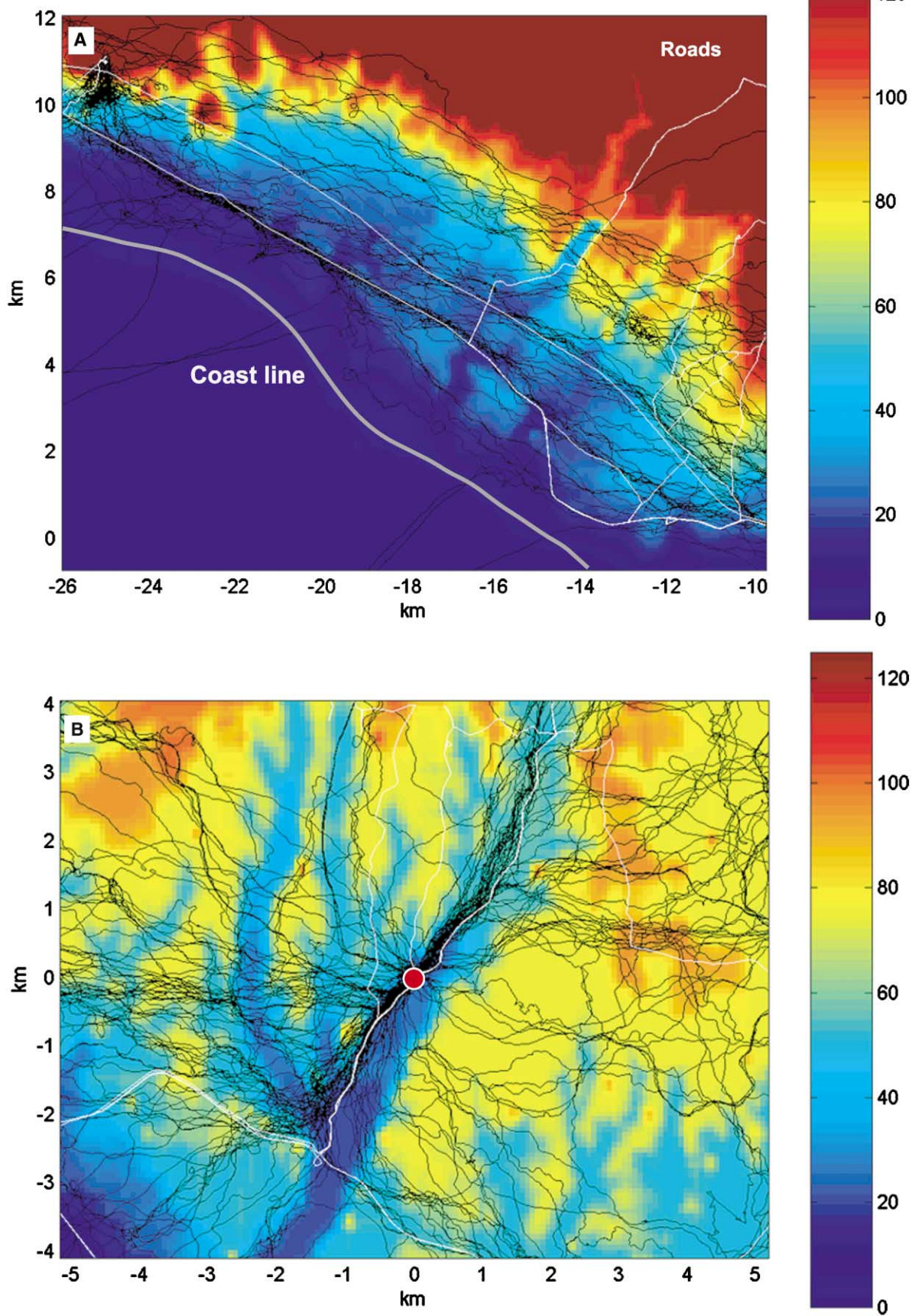


Figure S3. Altitude Map of the Coastal Plain and the Arrone Valley

(A) Coastal plain. All pigeon tracks run across a region that has no or few elevated areas. To the north, a chain of mountains (up to 400–500 m) borders the flight zone.

(B) Arrone valley. Pigeons must approach exit 22 over a minor elevation barring aerial view. However, altitude differences are small. At exit 22, there is no direct view of the loft. The pigeons must enter the Arrone valley and fly to the north for about 2 km in order to see it. Note that most tracks run at the left side of the valley where the valley road is located, but other tracks follow the rim of the plateau and apparently use it as guiding structure.

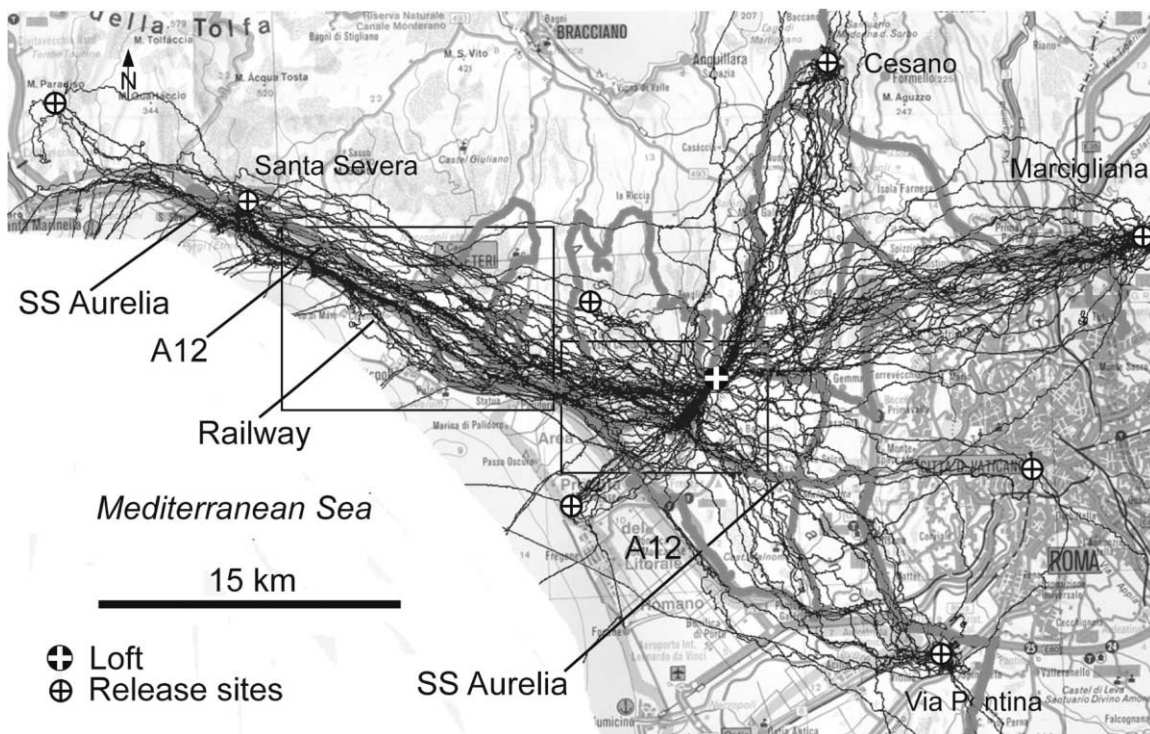


Figure S4. Black-and-White Version of Figure 1

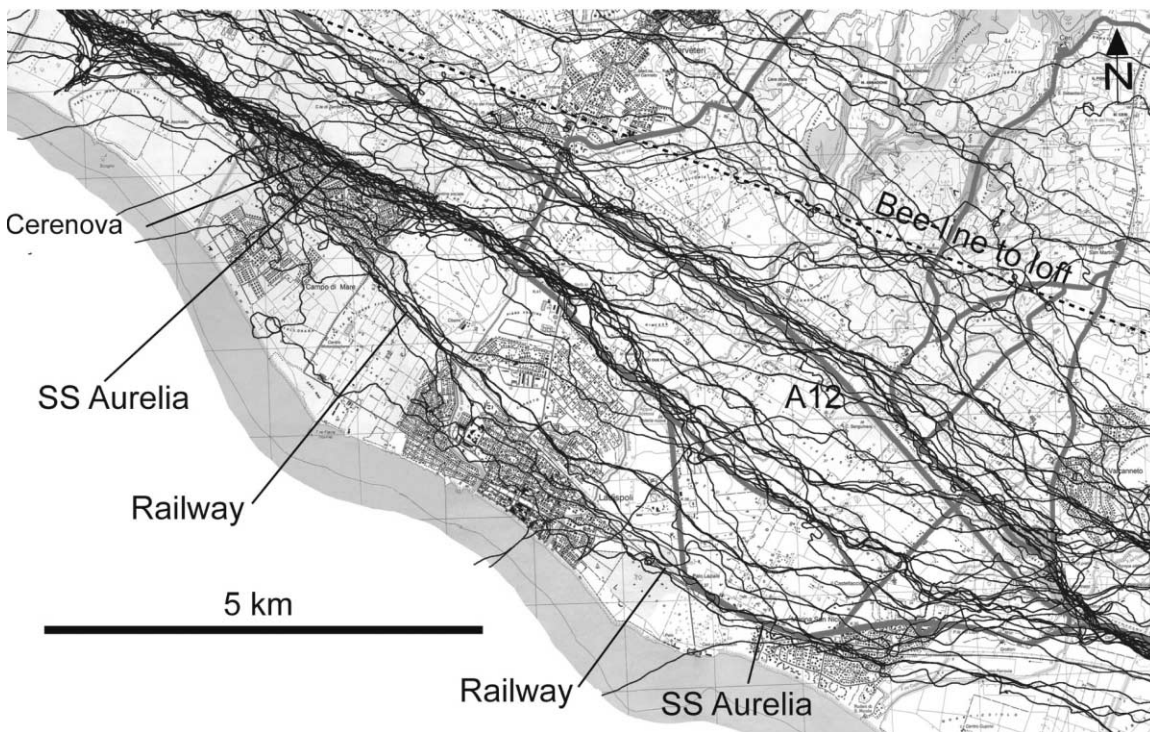


Figure S5. Black-and-White Version of Figure 3

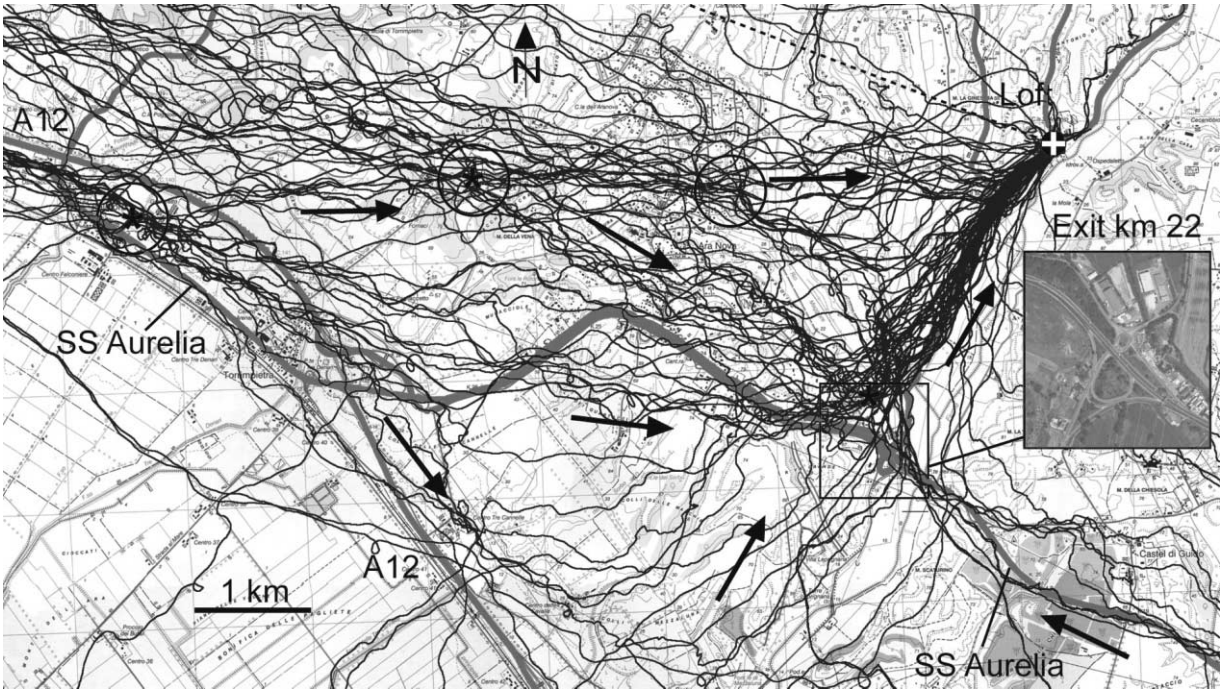


Figure S6. Black-and-White Version of Figure 5

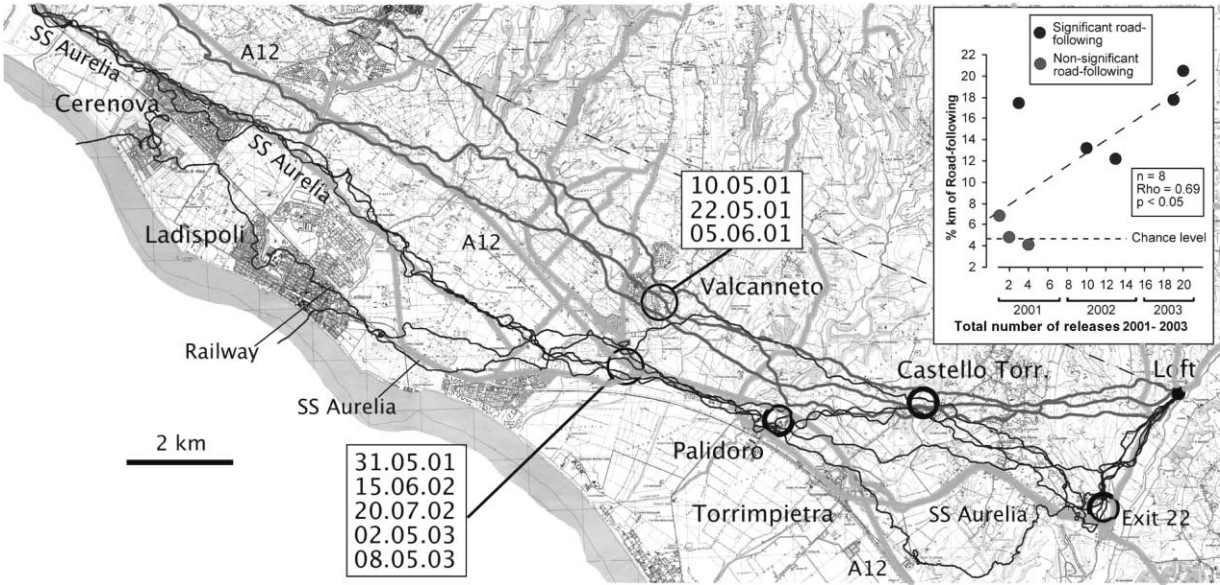


Figure S7. Black-and-White Version of Figure 6